

EZTrac Online Card System User's Manual & Service Guide

“Choose ACDI for all document control needs”

INTRODUCTION	4
OVERVIEW	4
FEATURES	5
MEMBRANE SWITCH/OVERLAY	5
MAGNETIC OR BARCODE SWIPE CARD	5
TCPIP NETWORK INTERFACE.....	5
CENTRALIZED SOFTWARE CONTROL	5
UNPACKING THE ONLINE CONTROL SYSTEM	6
EZTrac Online Account Controller.....	6
Nport Network Device Server	6
Operation and Setup Manual (This Manual).....	6
24 VAC Power Supply	6
Sign Kit.....	Error! Bookmark not defined.
H20-Interface Harness Pack (Copier Specific).....	6
H64-EXM Copier Interface Extension.....	6
NPORT NETWORK SETUP	7
SEARCH FOR DEVICES.....	8
CONFIGURE SERIAL	9
CONFIGURE OPERATING MODE.....	10
CONFIGURE NETWORK.....	12
EZTRAC SETUP	13
PHYSICAL MOUNTING.....	13
POWER-UP.....	13
SELECTING THE COPIER	13
Changing the Copier Type	13
SETTING THE PRICE PER COPY	14
IDENTIFYING THE FIRMWARE VERSION	14
Show EZTrac Firmware Version.....	14
PROGRAMMING THE EZTRAC CONTROLLER.....	15
ENABLING HIDDEN PINS MODE	15
Turning the Hidden Pins Mode ON or OFF	15
DELAY SETTINGS.....	15
Disable Delay.....	15
Blind Time	16
Swipe Card Time Out.....	16
Internal Pin Time Out.....	16
ADJUSTING THE WELCOME SCREENS.....	17
Edit Text on the Display.....	17
Edit Time Each Screen is Displayed	18

Introduction

Overview

This document describes the operation and service of the EZTrac Series copy/print controller. The EZTrac Series is the advanced generation of online copy/print control, combining innovation and engineering to meet the demand and provide the flexibility needed in an ever-changing market.

This EZTrac Series has up to 8 separate Price Lines to allow the option to charge for B & W, color, and premium paper size copies.

The EZTrac and EX2000 Network series of products are equipped with a TCP/IP network connection. This network connection interfaces to several network account and print management software solutions. Connectivity allows the unit to be field programmable for software updates enabling expanded functionality and compatibility.

The **EZTrac** family of products is sold in a variety of configurations:

- **EZTrac** – swipe card reader and keypad work as an online swipe keypad for account control.
- **Onepad** – keypad controller works as an online keypad for account control.
- **EX2000-RV** – bill acceptor, swipe card reader, and keypad revalue online account balances.
- **EX2000-NB** – coin changer, bill acceptor, and keypad work as a standalone cash copier controller, online account controller, and revalue station.
- **EX2000-NSWB** – coin changer, bill acceptor, swipe card reader, and keypad work as a standalone cash copier controller, online swipe account controller, and revalue station.

The EZTrac family of products can be configured to accept numerical keypad data entry, ABA, and AAMVA magnetic card standards, as well as all two dimensional barcode standards. This allows the EZTrac family to be compatible with existing and future campus id, library, and staff access cards.

Features

Membrane Switch/Overlay

The EZTrac features a membrane switch keypad built into the graphic overlay. This keypad provides access to all menus and options as well as a means for user input for internal and online user accounts. The LCD is a 2 line, 16-character display with a backlight allowing for multiple lines of text and instructions to be displayed.

Magnetic or Barcode Swipe Card

The EZTrac online controllers can be equipped with several different ID card reading mechanisms. The EZTrac is designed with Campus cards in mind and provides instant compatibility with the already existing card system. The EZTrac reads most bar code symbologies, both visible and infrared bar code data and/or up to three tracks of MagStripe data, all in a single swipe in either direction. The swipe data is sent over the network allowing the data format and card compatibility to be programmed & configured on the network server.

TCPIP Network Interface

Powered by the Nport Network module, the EZTrac Series has the flexibility to integrate with several online account and print management solutions. Via the ACDI Bootloader program, the EZTrac software can be updated for expanded functionality and device control compatibility.

Centralized Software Control

The EZTrac Series of devices, work as a copier/print controller and user terminal. This setup allows several features to be configured and/or modified from within the server software. By allowing configuration and customization via network software, the EZTrac remains flexible to meet the needs of the customer. The centralized configuration eliminates the need to visit each device when needing to make a change to the system. Software changes can add increased functionality without the need for added hardware cost.

Unpacking the Online Control System

The following equipment is included in the **EZTrac** shipment:

EZTrac Online Account Controller

This EZTrac online account controller is a compact copier control terminal measuring only 8" x 5" x 2 ½." A rugged-integrated numeric keypad, backlit high visibility lcd display, integrated swipe support, and an advanced copier interface come together to make this product easy to use, yet highly flexible.

Nport Network Device Server

This Nport network device server enables the EZtrac to connect with the outside world. The Nport provides an easy to setup and reliable connection to a large variety of network software solutions. The Nport allows you to leverage the investment already made in your computer network.

Operation and Setup Manual (This Manual)

This guide will walk you through the installation and setup process for your EZTrac online control system.

24 VAC Power Supply

This Power Supply converts the standard 110 VAC from a wall outlet and drops it down to 24 VAC for power to the EZTrac online account controller.

H20-Interface Harness Pack (Copier Specific)

This copier specific interface creates a control connection between the EZTrac online account controller and the copier or mfp. Contingent on the copier/mfp under control the EZTrac H20-Interface can enable color, b&w, and premium paper size signals.

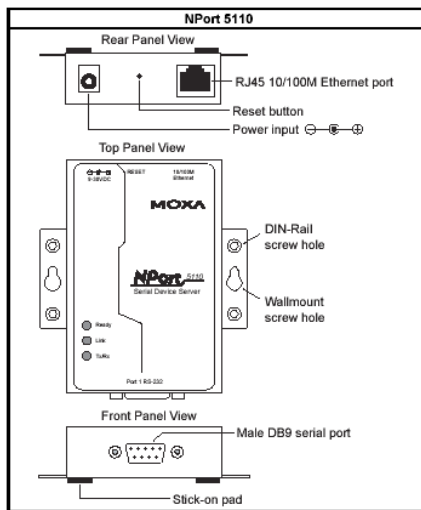
H64-EXM Copier Interface Extension

This harness provides a connection from the EZTrac to the H20 copier interface harness.

NPORT Network Setup

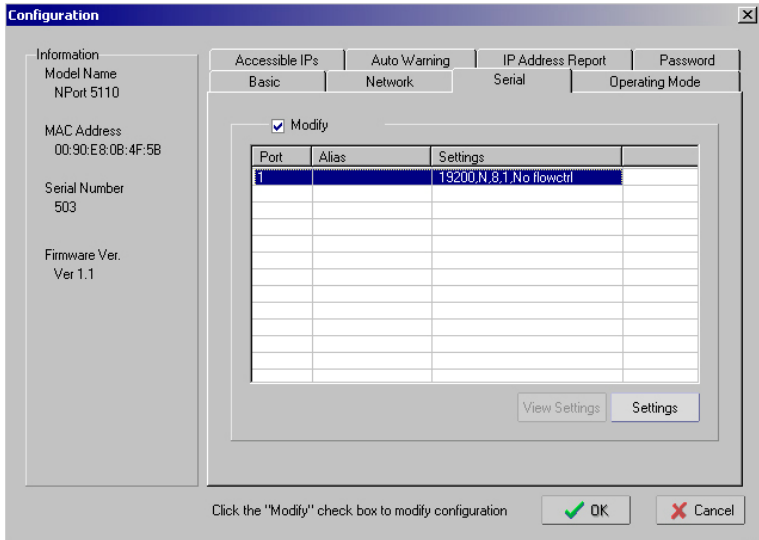
The EZTrac Online Card System connects to the network via an Nport device server. A basic knowledge of TCP/IP networks is helpful to ensure proper configuration.

- Install the software from the CD that comes with the MOXA NPort device.
- Run the NPort Administrator program.
- Connect the power cord and network cable to the NPort.



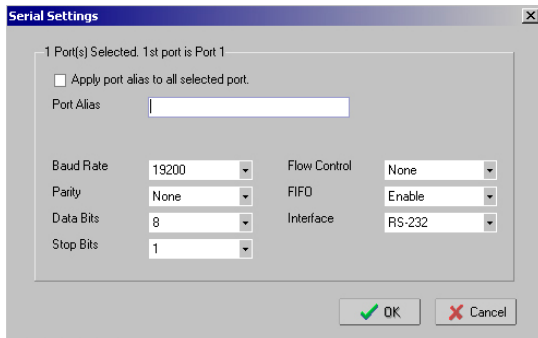
Configure Serial

- 1) Click on the Serial tab.
- 2) Checkmark Modify, highlight the NPort, and click on Settings.



- 3) The options for the serial settings should be:

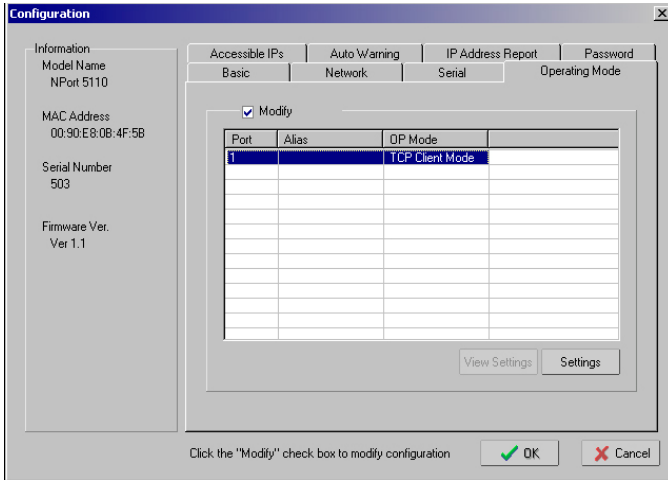
Baud Rate	19200	Flow Control	None
Parity	None	FIFO	Enable
Data Bits	8	Interface	RS-232
Stop Bits	1		



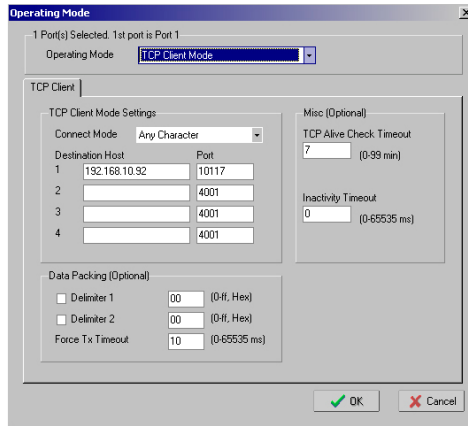
- 4) Click on OK to save the settings.

Configure Operating Mode

- 1) Click on the Operating Mode tab.
- 2) Checkmark Modify, highlight the NPort, and click on Settings.



- 3) The options for the Operating Mode should be:
 Operating Mode: TCP Client Mode
 Connect Mode Any Character
 Destination Host 1 ###. ###. ###. ### Port 10117
 (Replace ###. ###. ###. ### with the IP address of the Network Server)
 Force Tx Timeout 10
 TCP Alive Check Timeout 7
 Inactivity Timeout 0



- 4) Click on OK to save the changes.

Configure Network

- 1) Click on the Network tab.
- 2) Modify the IP address of the NPort by selecting the modify box.

An IP address can be manually assigned for the Nport. Make sure that the IP address selected is on the same network as the server you will be connecting the EZTrac to or that network has access to the network

Configuration

Information
Model Name
NPort 5110
MAC Address
00:90:E8:0B:4F:5B
Serial Number
503
Firmware Ver.
Ver 1.1

Accessible IPs Auto Warning IP Address Report Password
Basic Network Serial Operating Mode

Modify
IP Address 192.168.10.93

Modify
Netmask 255.255.255.0
Gateway
IP Configuration Static
DNS Server 1
DNS Server 2

Modify
Enable SNMP
Community Name public
Location
Contact

Click the "Modify" check box to modify configuration

- 3) Click the OK button to save the changes. NPort will update configuration.

Connect the ACDI machine to the NPort box using the serial cable provided.

EZTrac Setup

Physical Mounting

The ACDI Vending System will mount easily to any of the appropriate stands designed and offered by ACDI, or it can mount to the wall or cabinet.

Power-up

When powering on the **EZTrac Series**, the display will read “Initializing Online X.XXX”

All Swipe or Keypad enabled control devices will display the following on their LCD Display:

“Enter Account”

***Please refer to “ADJUSTING WELCOME SCREENS” for information on adding additional text screens and the amount of time each screen is displayed.

Selecting the Copier

The **EZTrac** has several settings for Copier Type. The **EZTrac** interfaces with virtually all copiers and printers. Select the copier mode that most likely matches the make and model of copier the device will be connected to.

Changing the Copier Type

1. Press Exit, then Eject, then Enter.
2. Enter Supervisor Pin default 73784230.
3. Press *FWD* until display reads “Service Mode.”
4. Press *ENTER* to select “Service Mode.”
5. Press *FWD* until display reads “Setup Menu.”
6. Press *ENTER* to select the Setup Menu.
7. Press *FWD* until display reads “Select Copier.”
8. Press *ENTER*, display will read “Copier Default” (Or, current copier type).
9. Press *ENTER* and a flashing cursor will appear.
10. Press *FWD* or *BACK* to change the copier type.
11. Once display shows the preferred Copier Type, press *ENTER* to save it.
12. Press *EXIT* 2 times followed by *EJECT* to exit the Service Mode.

Setting the Price per Copy

The cash price per copy can be adjusted by following the steps below:

1. Press Exit, then Eject, then Enter.
2. Enter Supervisor Pin default 73784230.
3. Press *FWD* until display reads "Service Mode."
4. Press *ENTER* to select "Service Mode."
5. Press *FWD* until display reads "Price Menu."
6. Press *ENTER*, the display will read "Edit Prices Cash Customers."
7. Press *ENTER*, the display will read "Cash Customers Price 1 \$X.XX."
8. Press *ENTER* to Edit Price 1 (cursor will appear on the display)
9. Using the keypad, enter the new price per copy and press *ENTER*
10. Press *FWD* to edit Price Line 2 and follow steps 6-8

EZTrac Price Menu		Price Label (Example)
Price 1	\$0.10	B&W
Price 2	\$0.50	Color
Price 3	\$0.20	B&W Premium Paper
Price 4	\$0.20	B&W Duplex
Price 5	\$0.40	B&W Premium Paper Duplex
Price 6	\$0.60	Color Premium Paper
Price 7	\$1.00	Color Duplex
Price 8	\$1.20	Color Premium Paper Duplex

Identifying the Firmware Version

The **EZTrac** has the ability for on-site upgrades. To know whether the machine requires an upgrade, you can check to see which Version is currently loaded on the **EZTrac** by following the instructions below.

Show EZTrac Firmware Version

1. Press Exit, then Eject, then Enter.
2. Enter Supervisor Pin default 73784230.
3. Press *FWD* until display reads "Service Mode."
4. Press *ENTER* to select "Service Mode."
5. Press *FWD* until display reads "Setup Menu."
6. Press *ENTER* to select Setup Menu.
7. Press *FWD* until display reads "Other Settings."
8. Press *ENTER*, display will read "Coin-Op X.XX" (current version #).
9. Press *EXIT* two times followed by *EJECT* to exit the Service Mode.

Programming the EZTrac Controller

Enabling Hidden Pins Mode

The EZTrac online account controller has the ability to hide the pin #'s displayed. This added security feature allows for discrete entering of access pins in public venues.

Turning the Hidden Pins Mode ON or OFF

1. Press Exit, then Eject, then Enter.
2. Enter Supervisor Pin default 73784230.
3. Press *FWD* until display reads "Service Mode."
4. Press *ENTER* to select "Service Mode."
5. Press *FWD* until display reads "Setup Menu."
6. Press *ENTER*, display will read "Cash Settings."
7. Press *FWD* until display reads "Other Settings."
8. Press *FWD* until display reads "Hidden Pins Mode Enabled."
9. Press *ENTER* to toggle between Enabled and Disabled.
10. Press *EXIT* three times followed by *EJECT* to exit the Service Mode.

Delay Settings

Disable Delay

This setting determines how long the EZTrac online account controller waits before disabling the copier.

Useful when last vend or partial pages are an issue.

1. Press Exit, then Eject, then Enter.
2. Enter Supervisor Pin default 73784230.
3. Press *FWD* until display reads "Service Mode."
4. Press *ENTER* to select "Service Mode."
5. Press *FWD* until display reads "Setup Menu."
6. Press *ENTER*, display will read "Cash Settings."
7. Press *FWD* until display reads "Delay Menu."
8. Press *ENTER*, display will read "Disable Delay 25 mSec."
9. Press *ENTER* to edit Disable Delay and a flashing cursor will appear.
10. Press *FWD* to increase the delay or press *BACK* to decrease the delay.
11. Press *ENTER* to save the new delay.
12. Press *EXIT*, display will read "Delay Menu."
13. Press *EXIT* two times followed by *EJECT* to exit the Service Mode.

Blind Time

This setting determines how long the EZTrac online account controller waits before accepting another copy charge pulse.

Useful when more than one charge is made per copy, this setting can correct the problem. By extending the Blind Time, the EZTrac online account controller can ignore additional pulses.

1. Follow steps 1 thru 7 from “Disable Delay” above.
2. Press *FWD* until display reads “Blind time 50 mSec.”
3. Press *ENTER* to edit Blind Time and a flashing cursor will appear.
4. Press *FWD* to increase or press *BACK* to decrease Blind Time.
5. Press *ENTER* to save the new Blind Time.
6. Press *EXIT*, display will read “Delay Menu.”
7. Press *EXIT* *two* times followed by *EJECT* to exit the Service Mode.

Swipe Card Time Out

This setting determines how long a swipe card account will remain enabled before disabling it due to inactivity.

1. Follow steps 1 thru 7 from “Disable Delay” above.
2. Press *FWD* until display reads “Card Time Out 00:06:00.”
3. Press *ENTER* to edit Card Time Out and a flashing cursor will appear.
4. Press *FWD* to increase or press *BACK* to decrease Card Time Out.
5. Press *ENTER* to save the new Card Time Out.
6. Press *EXIT*, display will read “Delay Menu.”
7. Press *EXIT* *two* times followed by *EJECT* to exit the Service Mode.

Internal Pin Time Out

This setting determines the amount of time the EZTrac online account controller displays a balance of “\$0.00” before returning to the Idle Menu.

1. Follow steps 1 thru 6 from “Disable Delay” above.
2. Press *ENTER*, display will read “Disable Delay.”
3. Press *FWD* until display reads “Pin Time Out 00:05:00.”
4. Press *ENTER* to edit Pin Time Out and a flashing cursor will appear.
5. Press *FWD* to increase or press *BACK* to decrease Pin Time Out.
6. Press *ENTER* to save the new Pin Time Out.
7. Press *EXIT*, display will read “Delay Menu.”
8. Press *EXIT* *two* times followed by *EJECT* to exit the Service Mode.

Adjusting the Welcome Screens

Edit Text on the Display

Adjust the text displayed on Screens 1 through 12 by following the steps below:

1. Press Exit, then Eject, then Enter.
2. Enter Supervisor Pin default 73784230.
3. Press *FWD* until display reads "Service Mode."
4. Press *ENTER* to select "Service Mode."
5. Press *FWD* until display reads "Setup Menu."
6. Press *ENTER*, the screen will display "Cash Settings."
7. Press *FWD* until display reads "Edit Welcome Screens."
8. Press *ENTER*, the screen will display "Edit Screen 1."
9. Press *FWD* until display reads "Edit Screen 2."
or the number of screen desired to be edited.
10. Press *ENTER*, the screen will read "Edit Text."
11. Press *ENTER*, the screen will display "Color \$0.50."
12. Press *ENTER*, the screen will display a line under the first character on the screen "Color \$0.50."
13. Pressing *FWD*, the character currently underlined will change to the next valid character "Dolor \$0.50."
14. Pressing *BACK*, the character currently underlined will change to the prior valid character "Color \$0.50."
15. Pressing 6 will switch the underlined cursor to the right.
16. Pressing 4 will switch the underlined cursor to the left.
17. Pressing 8 will move the underlined cursor down.
18. Pressing 2 will move the underlined cursor up.
19. Pressing 0 will delete the underlined character.
20. Pressing 5 will clear the text from the entire screen.
21. Pressing *FWD* and *BACK* to edit the character.
22. Pressing 7 and 9 to edit the character from lower case to upper case.
23. Press *ENTER* to disable editing.
24. Press *EXIT*, the screen will display "Edit Text."
25. Press *EXIT*, the screen will display "Edit Screen 2."
26. Press *FWD* to edit other screens and follow steps 9-22.

Note: Welcome Screens 1 thru 8 are automatically set to price lines 1 thru 8 respectively. Therefore, all but the lower right 7 characters are editable.

Edit Time Each Screen is Displayed

Adjust the time that each welcome screen is displayed by following the steps below:

1. Press *Exit*, then *Eject*, then *Enter*.
2. Enter Supervisor Pin default 73784230.
3. Press *FWD* until display reads "Service Mode."
4. Press *ENTER* to select "Service Mode."
5. Press *FWD* until display reads "Setup Menu."
6. Press *ENTER*, then screen will display "Cash Settings."
7. Press *FWD* until display reads "Edit Welcome Screens."
8. Press *ENTER*, then screen will display "Edit Screen 1."
9. Press *ENTER*, then screen will read "Edit Text."
10. Press *FWD* until the display reads "Edit Time."
11. Press *ENTER*, then screen will display "Time 2" (**Default is 2 sec**).
12. Press *ENTER*, the cursor will blink.
13. Pressing *FWD* will increase the value.
14. Pressing *BACK* will decrease the value.
15. Press *ENTER* to lock in value.
16. Press *EXIT*, then screen will display "Edit Time."
17. Press *EXIT*, then screen will display "Edit Screen 1."
18. Press *FWD* to edit Welcome Screen 2 and follow steps 8-16.

Configuration Notes**Network Settings**

IP Address:

Netmask:

Gateway:

IP Configuration:

DNS 1:

DNS 2:

Operating Mode Settings

Operating Mode: TCP Client Mode

Connect Mode: Any Character

Destination Host 1:

Destination 1Port: 10117

Force Tx Timeout: 10

TCP Alive Check Timeout: 7

Inactivity Timeout: 0

Delay Menu Settings

Disable Delay:

Blind Time:

ACDI
7428 Lindsey Rd.
Little Rock, AR 72206
1 (800) 990 – 2234
www.acd-inc.com