

# Healthcare Vertical

The trends in the broader healthcare industry all play favorably for increasing spending on software solutions, especially in the corporate healthcare departments.

PaperCut is the preferred cost recovery solution for healthcare institutions. Its robust Rules Based Routing, Secure Print Release, Web-Based Dashboard, and many other features makes it the easiest, most comprehensive way to manage print costs while fulfilling the requirements of HIPAA certification.

Registered Hospitals in the US

## 5,564

Global Health IT Market Size by 2019

## \$114 Billion

Source: Mitrastech

## HEALTHCARE MARKET

### PAIN POINTS >

Cost Savings

Accountability

Security

Accessibility



## COST SAVINGS

### EHR/EMR PRINT TRACKING

PaperCut MF print tracking can be integrated with many of today's popular EHR/EMR software solutions\*. The prints can be tracked at the user level as well as the cost of the print operations from networked and non-networked printers alike. Everything is bound to the user's name.

More Cost Savings features:

- **Unreleased Print Jobs**
- **Rules Based Routing**
- **System Health Monitoring**

\* Certain conditions must exist for EHR/EMR Print Tracking. Please contact your ACDI representative for more details.

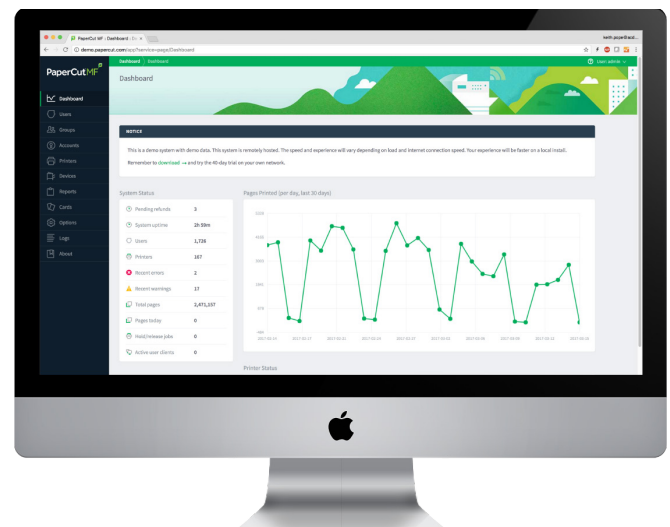
## ACCOUNTABILITY

### WEB-BASED ADMINISTRATION

PaperCut makes it easy to manage your devices, networked or non-networked, without complexity. Instantly see who is printing, what they are printing, when they printed and on which device. View the central dashboard to see any one of the 80 pre-built reports and archived documents for better business decision-making.

More Accountability features:

- **80+ Reports**
- **Who, What, When, Where, Why and How**
- **"You can only manage what you measure."**





## SECURITY SECURE PRINT RELEASE

PaperCut MF's Secure Print Release provides a simple solution that places jobs in a holding state until the user authenticates and releases the job at the printer. This is the perfect way to protect the security and integrity of sensitive patient healthcare information.

More Accountability features:

- **Authentication**
- **Full Page Watermarking**
- **Print Archiving**

## ACCESSIBILITY MOBILITY

Track and control printing from any type of device, on all popular platforms (iOS, Android, Chrome OS, Windows or Mac OS). Quickly locate any printer on your network by location, name, or code with the updated keyword search or securely manage all traffic and application deployment in your own network.

More Accountability features:

- **Scanning**
- **Secure Mobile Print**
- **Find Me Printing**
- **Site Server**



### Brand Neutral



+

### Platform Neutral



+

### Server or Direct Setup



PaperCut MF

“ Since installing PaperCut, MetroHealth has seen about a 50% reduction in paper cost. At 54 Million pages per year, that's quite a savings. ”

