

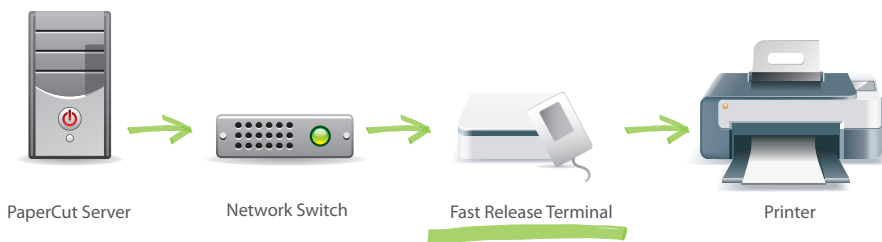
TCP/IP Fast Release

Simple and Easy Print Release on any Device

Card authentication for any network

A TCP/IP fast release terminal brings authentication to any network printer with no configuration or modification. This allows for the integration of a comprehensive authorization solution without replacing legacy devices at high cost. The TCP/IP Fast Release Terminal can be inserted into your network in front of many devices, with a **card reader** or **keypad** connected to authorize print jobs. This enables your print devices to be easily integrated alongside your PaperCut card authentication solution.

How Does It Work?



The TCP/IP Fast Release Terminal is inserted between the LAN port of your print device and the network port. It allows for the connection of a **card reader** or **keypad** via USB to authorize print jobs. When users arrive at the device and present their card or enter their PIN number, PaperCut authenticates the users credentials and releases the pending print job. This is achieved through PaperCut's "fast release" feature, as PaperCut syncs with your AD or LDAP user accounts.

Overview

- Simple, vendor-agnostic implementation
- Easy to use for end users
- Economical to implement and easy to set up
- No modifications required to existing print devices
- Compatibility with almost any network-connected print device
- Follow-me printing and an integrated authentication system with existing access, security, student, staff and ID
- Authentication options include; Proximity, Mag-Stripe, Bar-Code and Numeric Keypads



TCP/IP Fast Release for PaperCut

Users

- A user's card number is associated with their network domain/directory login (via LDAP field)
- The user prints to a hold/release queue or a Find-Me virtual queue
- The user presents their card or PIN Number at a reader or keypad located next to the printer
- If the card or PIN is valid, jobs are released. Users receive feedback (e.g. invalid authentication) via audible tones and/or LED flashes.

System

- Card readers are located next to printer(s) and connect to the Ethernet network
- Each reader is allocated an IP address
- Readers are associated with a print queue via the PaperCut administration interface
- Card swipes are validated against the card numbers stored in PaperCut's database (which in turn may be sourced from AD or LDAP)
- Jobs associated with the user account are released for printing

What types of cards are supported?

The TCP/IP Fast Release terminal supports a variety of card reader technology options including: Proximity Cards, Mag Swipe Cards and Barcode Cards (Mifare, 125 KHz, HID, Legic, Inditag, and Multi ISO).

What are the benefits?

Using a network card reader for print release is an economical and efficient approach. Due to the standard nature of card readers, the learning curve for end users is simple. Card readers are easy to install either independently or alongside your existing MFDs or hardware release terminals, and require only a network connection and a power supply. Depending on your implementation and environment, card readers work with any printer, and often don't require complex integration with the printer or copier.

ACDI - Access Control Devices Inc.
403 North Main Street, Benton, AR 72015



sales@acd-inc.com | acd-inc.com | 800.990.2234